



## Welcome to Epicbliss Solutions

With 10+ years of market experience in various IT domains, we have pioneered ourselves in providing end-to-end solutions and services in the areas of information technology, consulting, and outsourcing in various segments of industry like advertising, education, finance, healthcare, life sciences, hotel/hospitality, media and entertainment, mobile and wireless, retail, real estate, sports and fitness, technology, non-profit and more.

[www.epicbliss.tech](http://www.epicbliss.tech)

# Our Process



At Epicbliss, we pay very close attention to detail and put the client's needs and desires at the forefront of their design concepts. Our team of talented, dynamic, and young professionals is capable of providing high-end quality solutions to our clients with the right blend of technology, domain knowledge, and effective methodology.



# Our Team



At Epicbliss, we have 11 + Microsoft, Tableau, Amazon, Azure, Mongo DB, Android, Machine Learning Certified developers work hand in hand with other teams to provide epic solution to client's needs.

# Services We Offer



**Microsoft  
Technologies**



**Mobile Apps  
Development**



**Atlassian**



**Machine  
Learning**



**Web  
Technologies**



**BI and Data  
Visualisation**



## **Business Intelligence**

Business Intelligence (BI) comprises the strategies and technologies used by enterprises for the data analysis of business information.



## **AI & Machine Learning**

Artificial intelligence is apparently intelligent behavior by machines, at Ridgeant our naturally intelligent developers develop the various artificially intelligent tools using vast and deep AI & Machine learning algorithm.



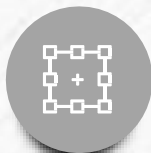
## **Big Data & Cloud**

Ridgeant is the answer to all data related queries, be it handling, maintaining, managing, extracting, storing data from a heterogeneity of structured and unstructured sources of information.



## **Mobile Apps**

We are mobile app customization expert, and we plan app strategy, we build user-friendly UX, we test to make app bug free & we Release apps with its bugs free equilibrium.



## **Web app development**

We cater various language support to build the concrete web applications. We support .net, Java and PHP languages to build the web apps for our clients.



## **Developers Per Hour**

Hire our seasoned Developers per hour, they are well capable in their expertise, and they will be all yours as a good working partner.



# Our Capabilities in Tableau



- Good knowledge in DAX (Data Analysis Expressions) for better and complex visual.
- Tableau Desktop is used for better feature access provided by tableau.
- Better visualization using suitable charts, KPIs, Metrix and table.
- Deep insights using data and complex visuals.
- Deploying Tableau Dashboards to tableau servers.
- Schedule auto refresh using Tableau server.
- Implementing Row Level security.

## On-premise and cloud BI Solution.

### **Tableau Desktop**

The Windows-desktop-based application for PCs and desktops, primarily for designing and publishing reports to the Service.

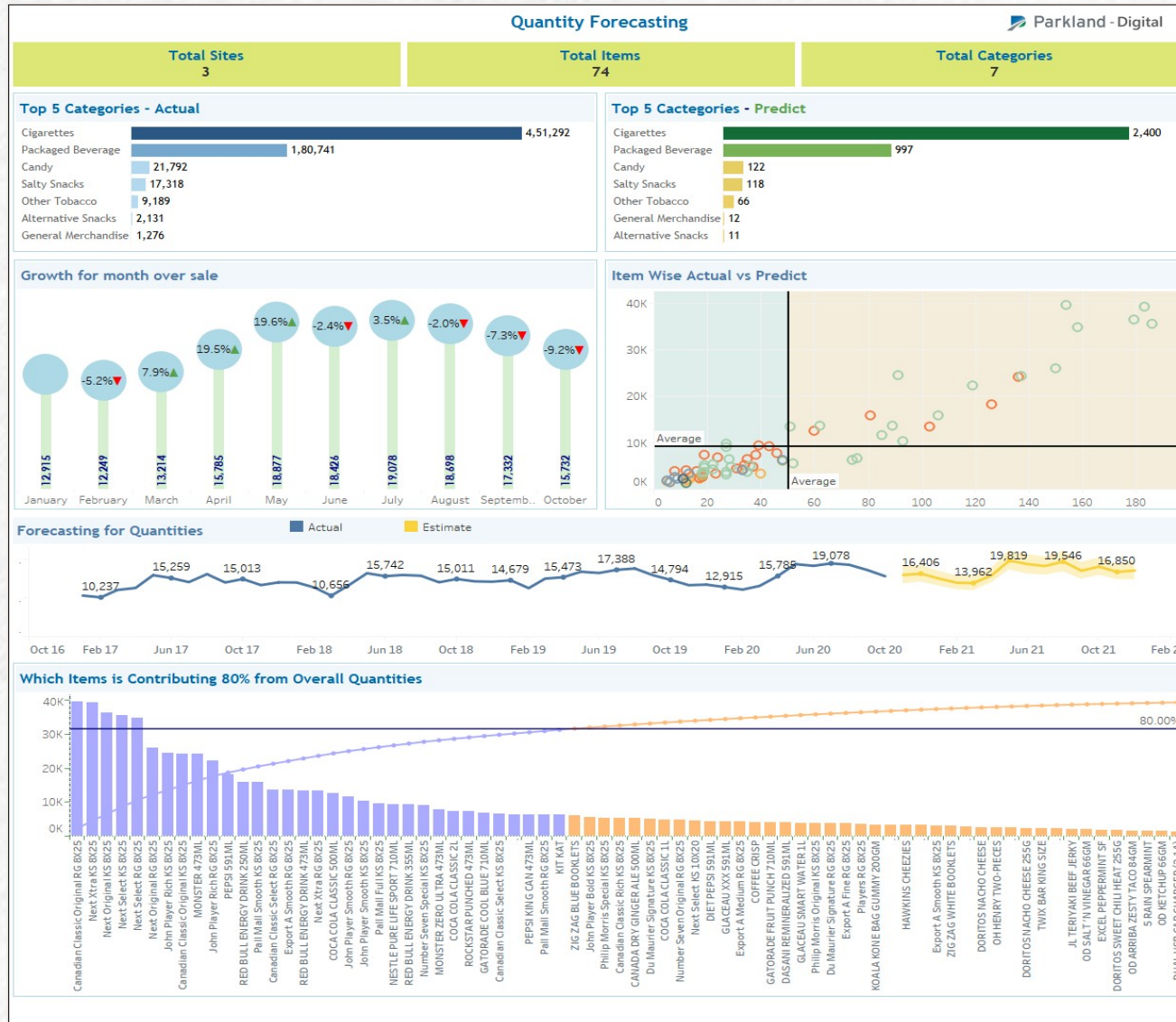
### **Tableau Online**

The website-based service to create , develop and edit dashboards, primarily for designing and publishing reports to the Service.

### **Tableau Server**

The website-based service to primarily for maintaining, designing and publishing reports to theService.

# Tableau Projects Delivered



## Dashboard for Quantity

### Forecasting Version 1

The Data has the prediction value of sales for the coming month calculated using Machine learning model and then loaded in the Warehouse (Redshift).

The First level in the dashboard shows the static overall Information like Total Sites, Total Items in overall sites and Total types of Categories.

The 2<sup>nd</sup> level shows the Top 5 and Bottom 5 Categories (Actual Value vs Predicted Value)

Growth for month over sales session i.e. Lollipop charts show month sales value and also their growth w.r.t previous month



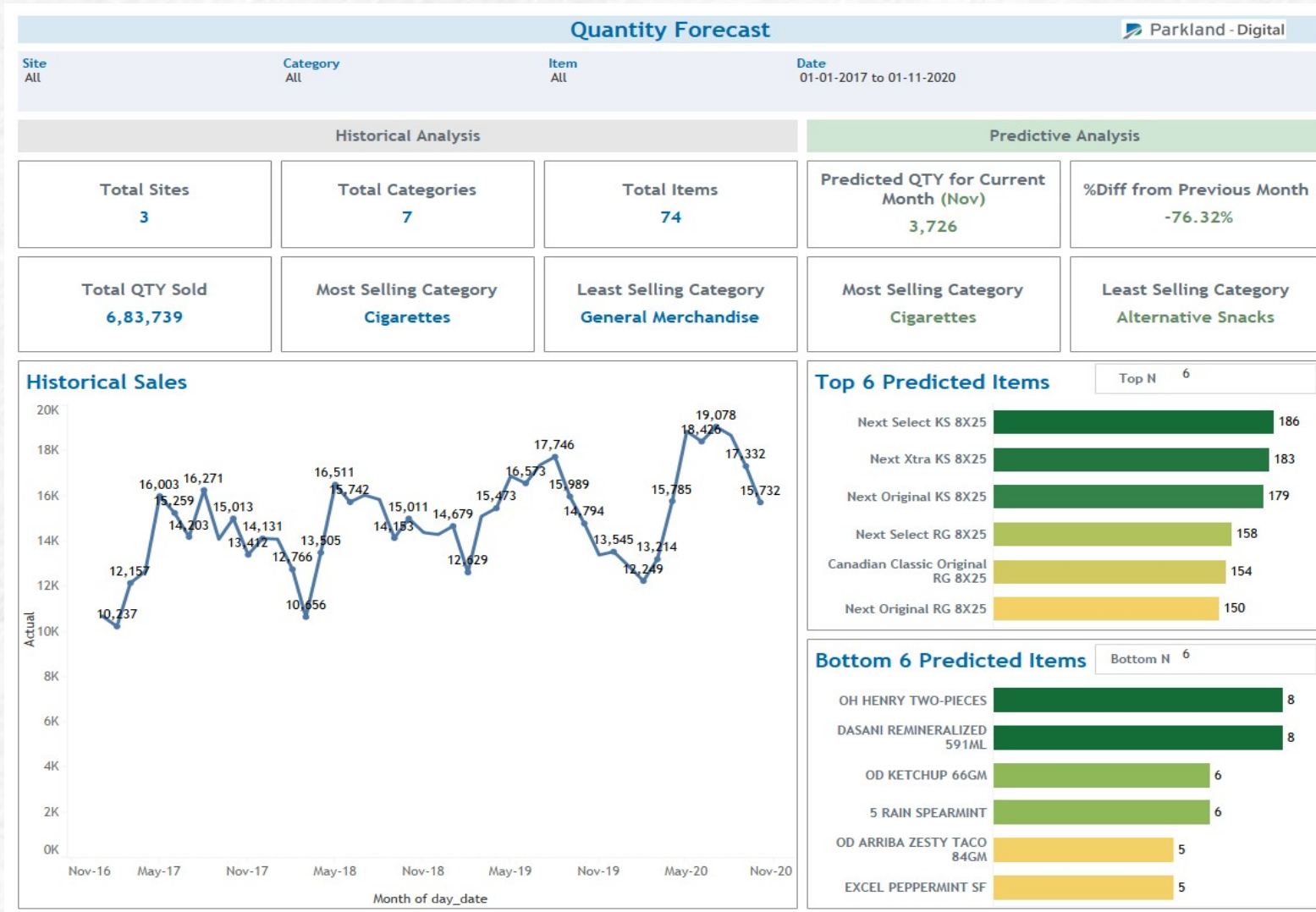
# Tableau Projects Delivered



## Dashboard for Quantity

### Forecasting Version 2

The Left Session in the dashboard is for Historical Analysis whereas the right session shows the predicted insights.



# Tableau Projects Delivered

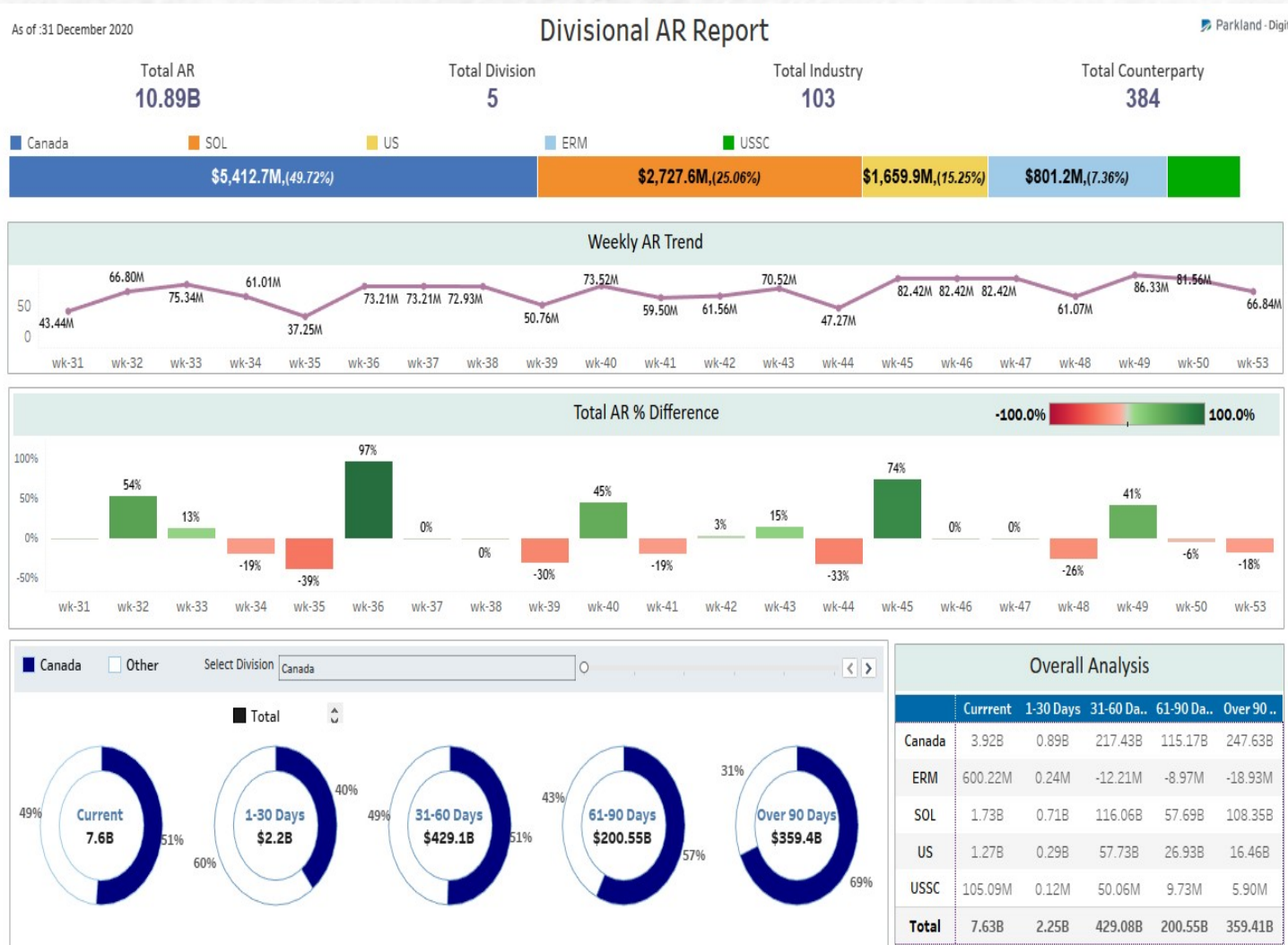


## Dashboard for Divisional AR Credit Risk Management

This Dashboard help us to analyse the Accounts Receivables (AR) i.e Due amount w.r.t to Different Divisions.

Business Question answered by the Dashboard:

1. Total AR Amount, Divisions, Industries, and count of all the Counterparties?
2. Overall Amounts w.r.t different divisions like Canada, SOL, US, ERM, and USSC?
3. How is the weekly trend of AR?
4. Performance (Growth) with previous Week?
5. With respect to different due periods/slots what percent of AR the selected Division vs other Division?
6. Overall AR Analysis and Amount for all Division?





# Tableau Projects Delivered

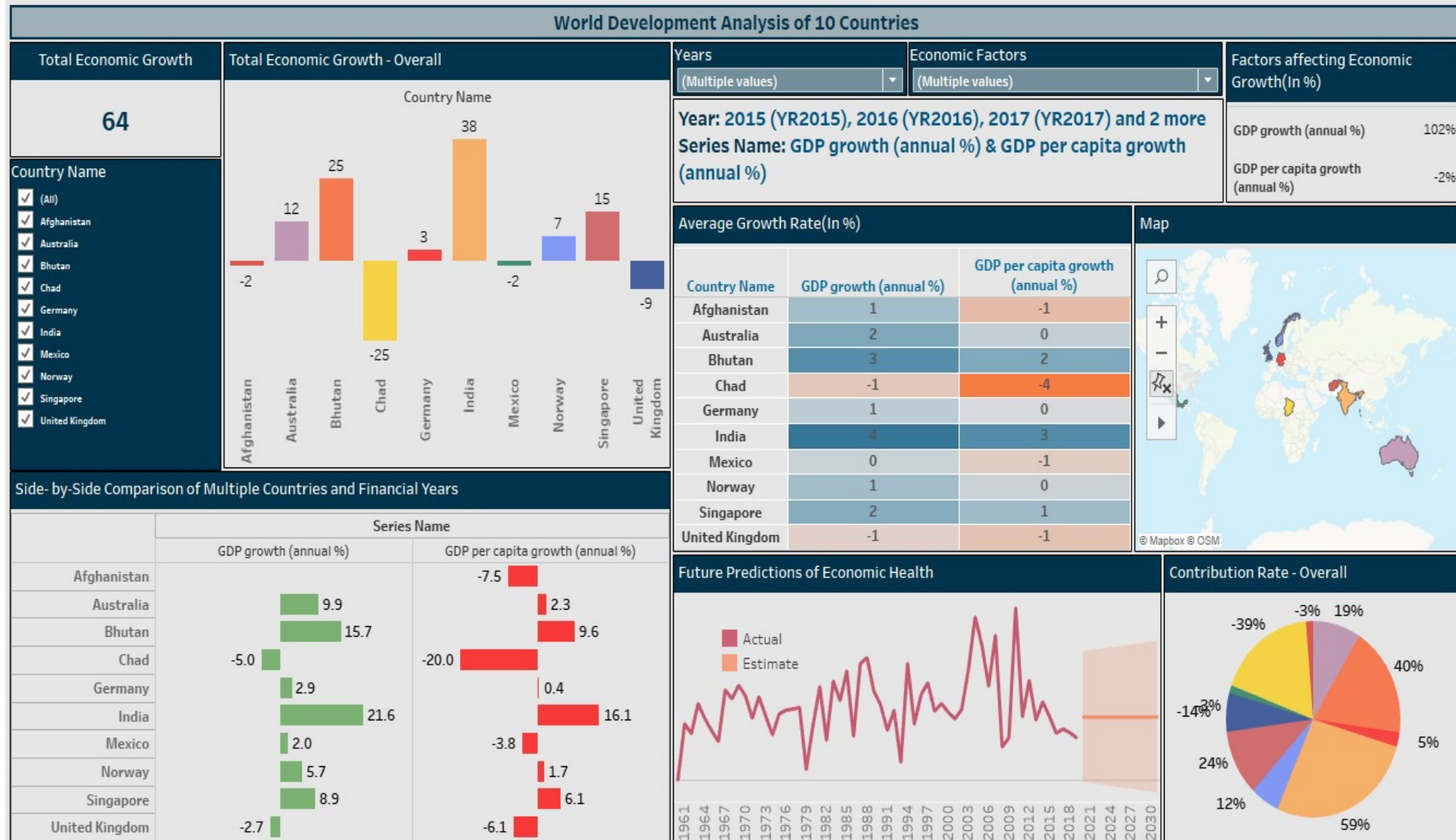


## Dashboard for Profit Analysis

This Dashboard is Developed using Tableau Desktop for Profit and Discount Analysis Using Excel As Data Source.



# Tableau Projects Delivered

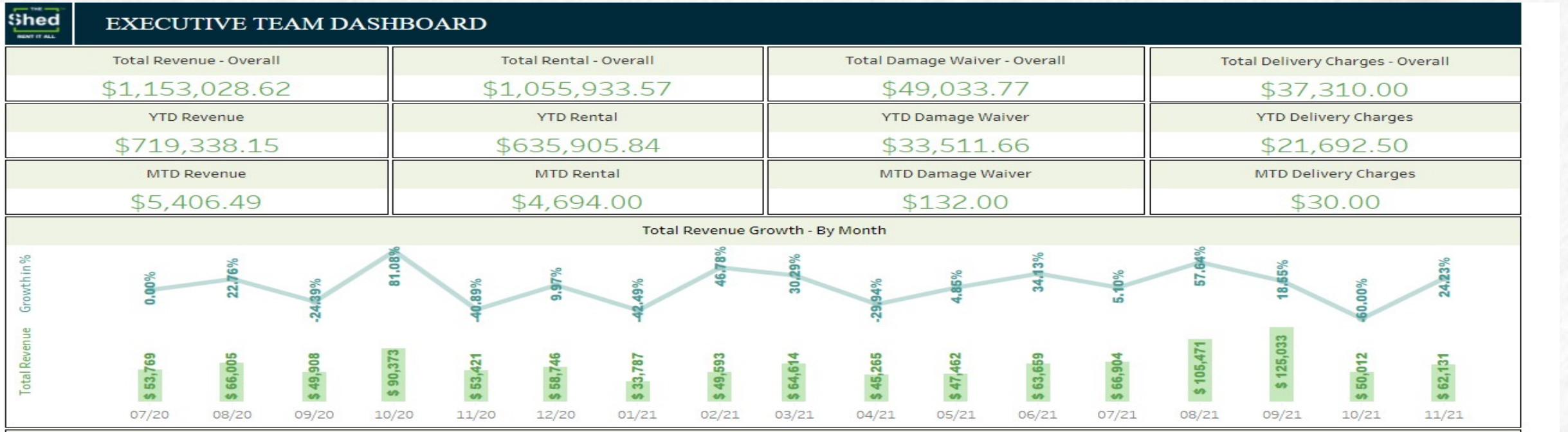


## Dashboard for The World Bank

This Dashboard is Developed using Tableau Desktop for Economic health of 10 different countries over several financial years using different visuals like Bar graphs, Maps, Line graphs and other features like future prediction by embedding CSV as Data Source.



# Tableau Projects Delivered



## Executive Team Dashboard for The Shed

This Dashboard is Developed using Tableau Desktop for various factors affecting business like Revenue, Orders, Customers, coupons etc.

Here first half represents Total, YTD and MTD for Revenue, Rental , Damage Waiver and Delivery Charge in numbers.

Whereas second half represents Total Revenue growth in % which is represented by a line graph and Total Revenue in numbers which is represented by bar graph for each month.

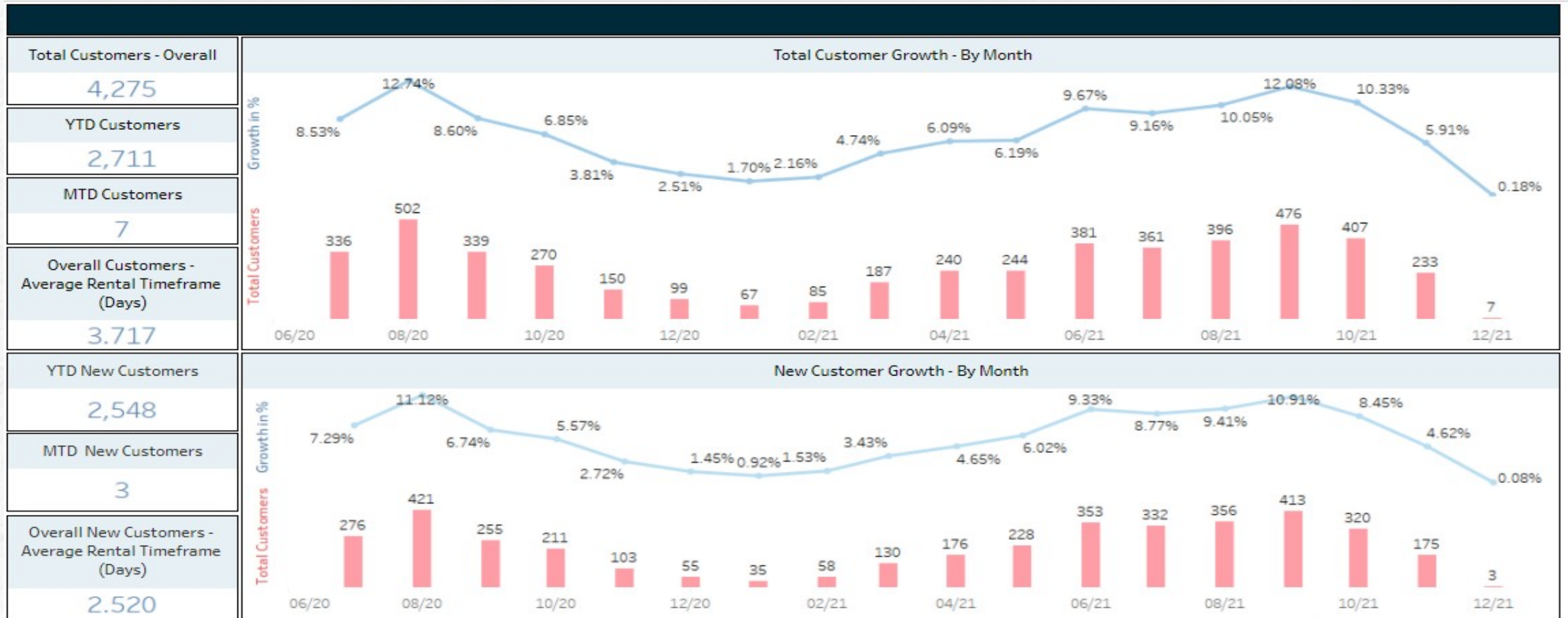
<https://epicbliss.tech>

# Tableau Projects Delivered



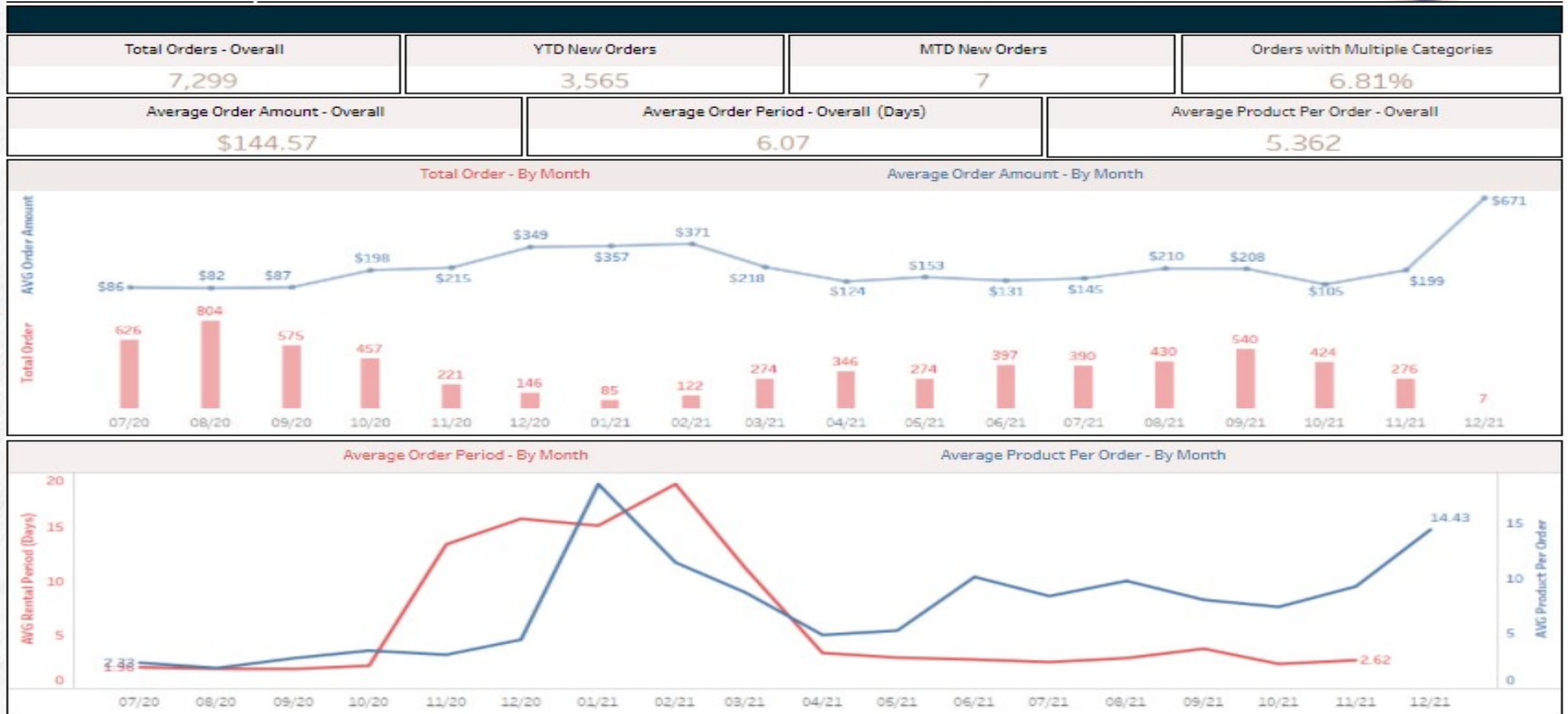
## Executive Team Dashboard for The Shed

Different KPI's related to Customers gained , new customers acquired, and Orders generated by company throughout different months have been visualized using numbers, Line graphs and Bar graphs.





# Tableau Projects Delivered



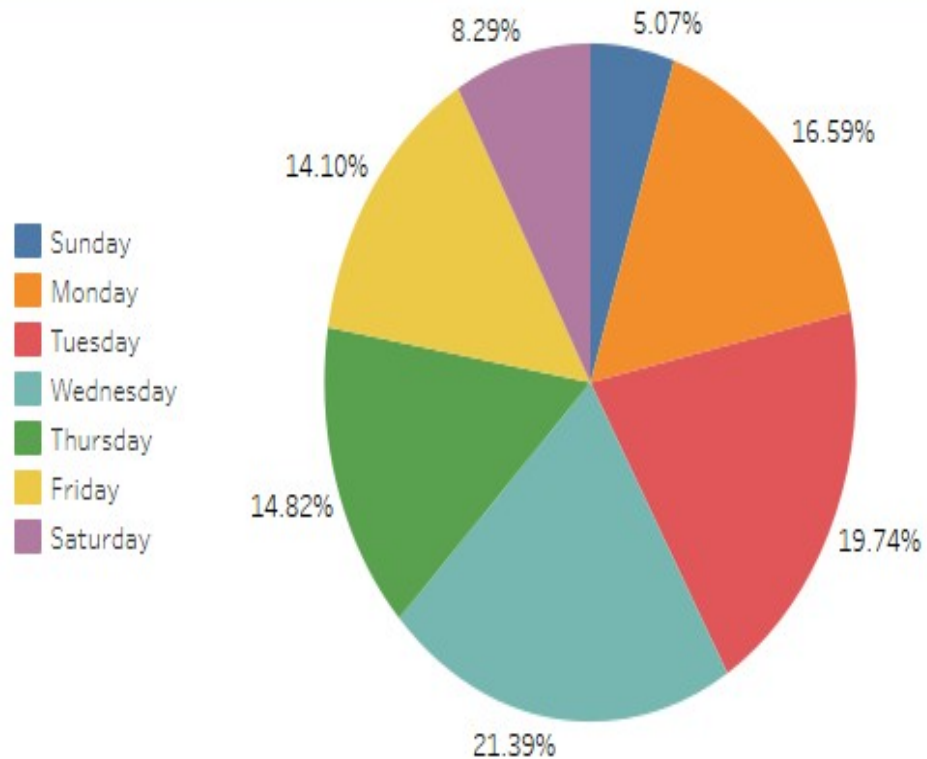
# Tableau Projects Delivered



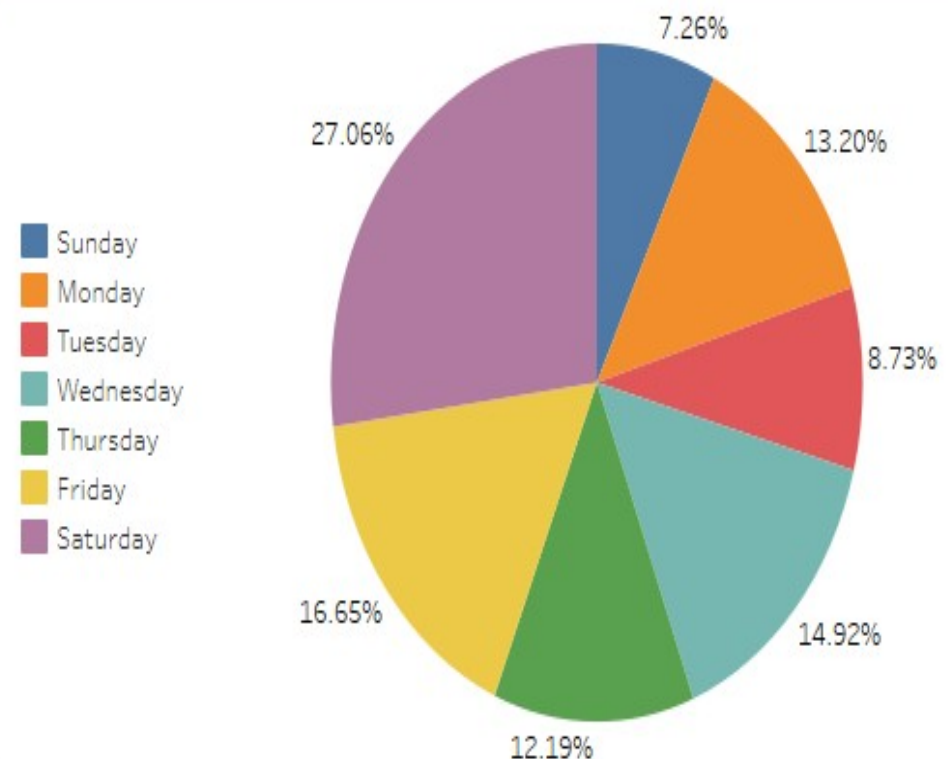
## Executive Team Dashboard for The Shed

Two Pie charts were created to show percentage value on each day of the week for Transactions made and Pickup & Delivery on each order performed, respectively.

Transactions by day of the week



Pickup and Delivery by day of the week



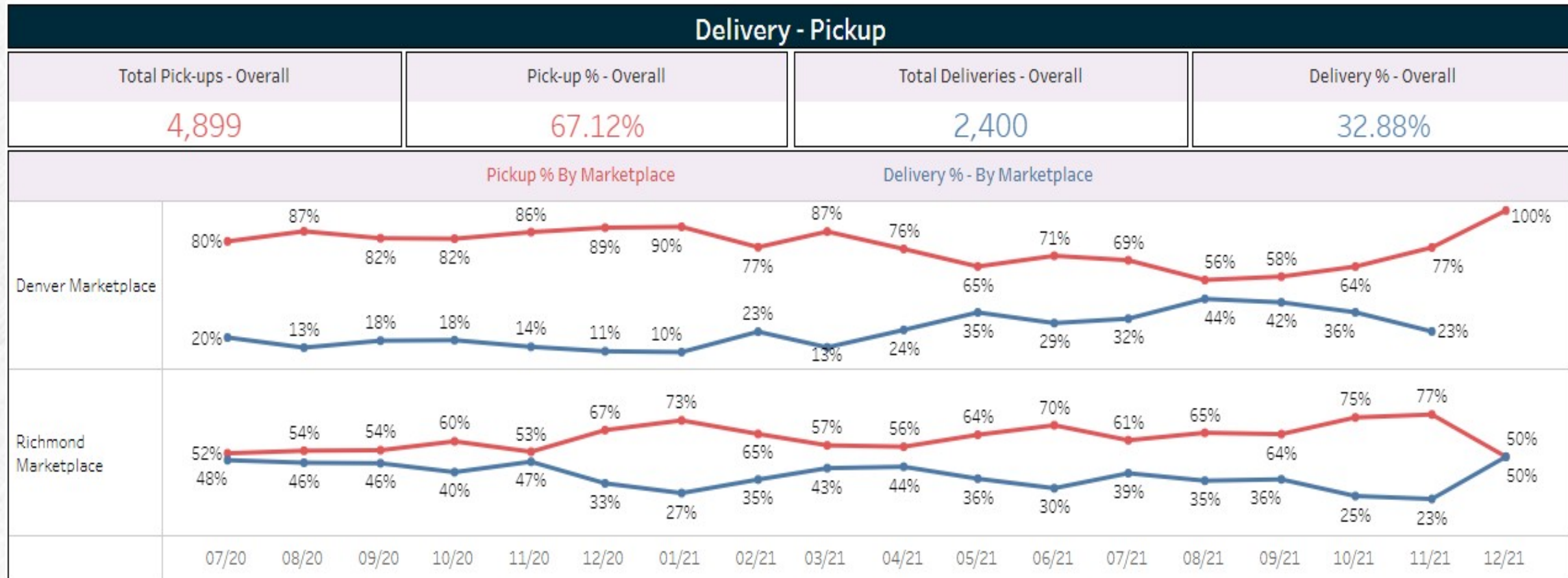


# Tableau Projects Delivered



## Customer Service Dashboard for The Shed

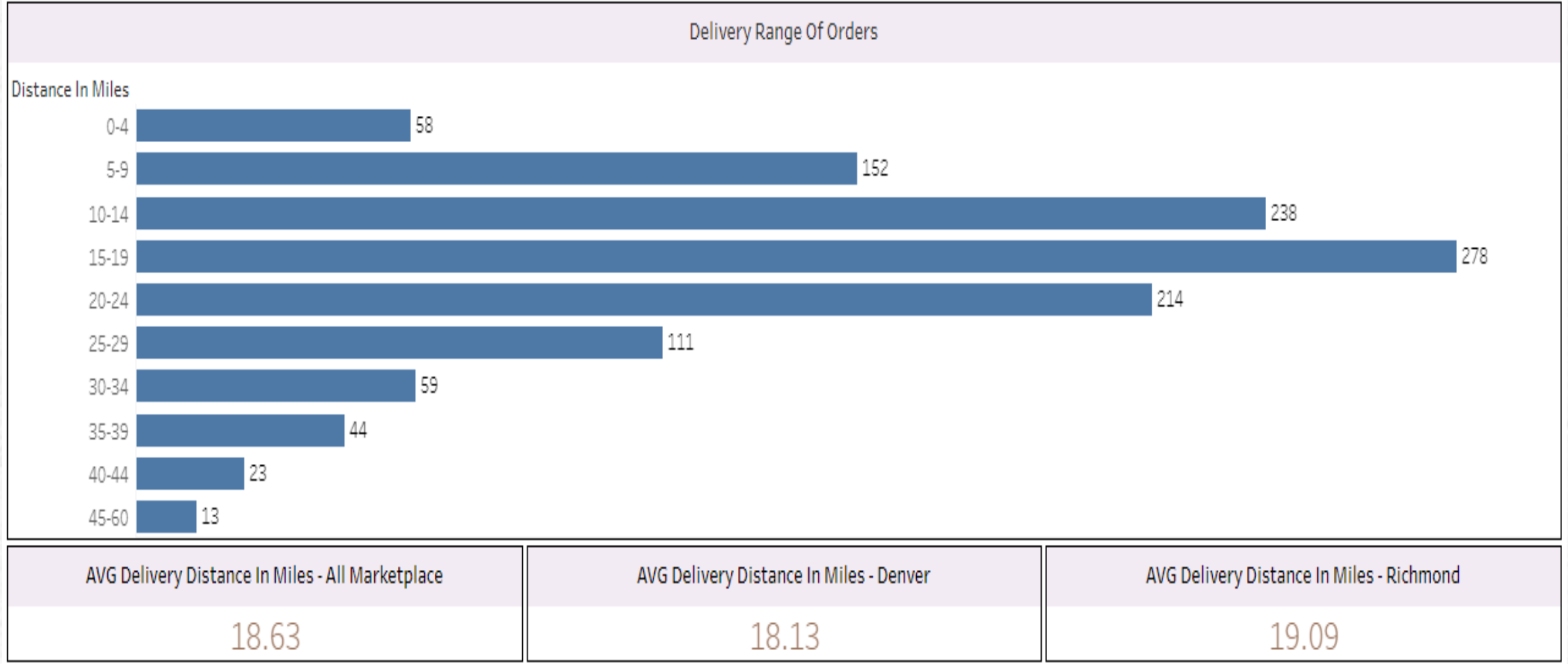
KPI's related to Delivery and Pickup by each marketplace while using different formats like numbers, Line graph, Bar graphs and Maps accordingly so that understanding could be made easier.



# Tableau Projects Delivered

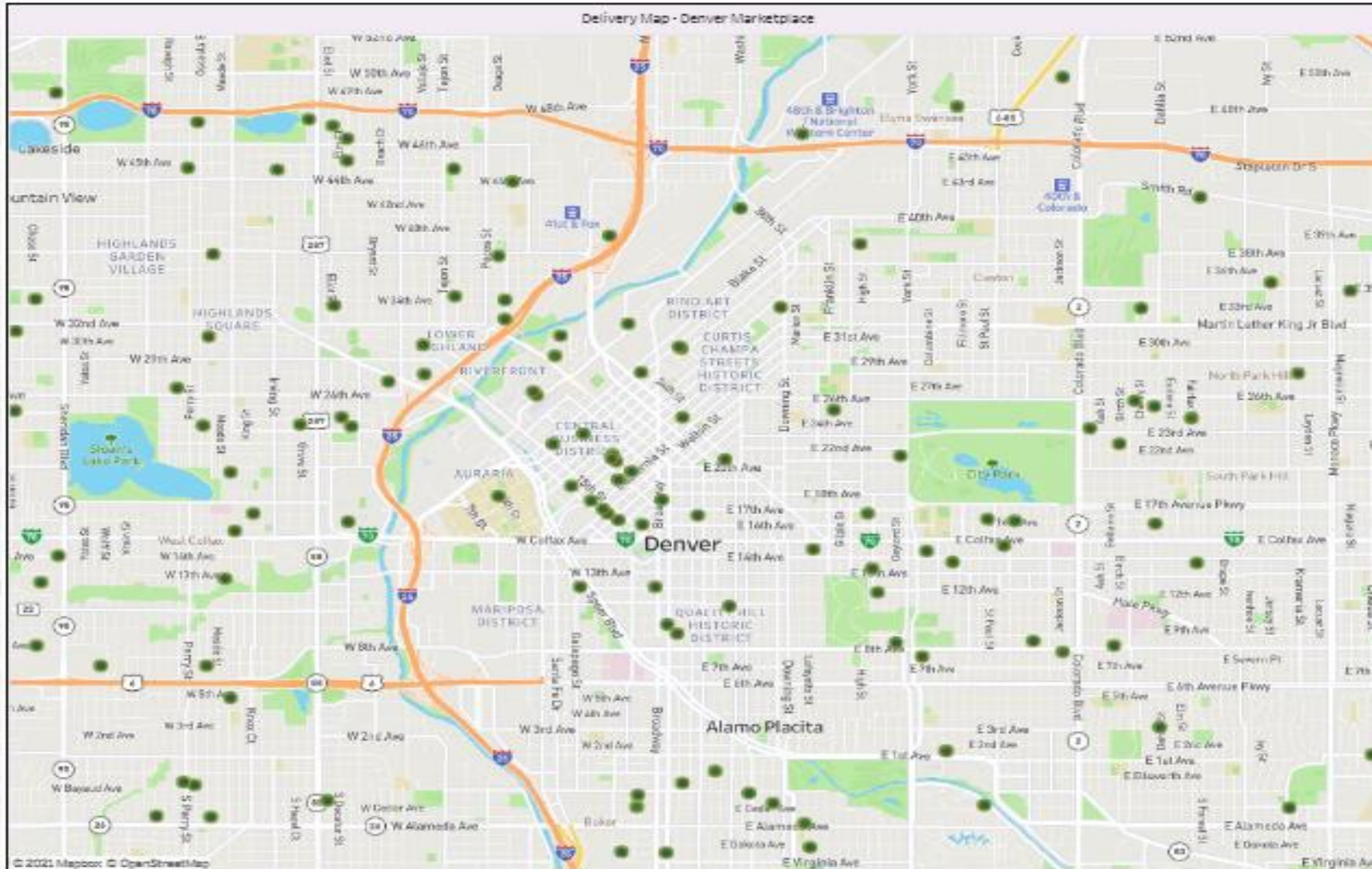


## Customer Service Dashboard for The Shed





# Tableau Projects Delivered



## Customer Service

## Dashboard for The Shed

Customer address location of each order Delivered is been located on the map by marketplace of the company using Maps visuals.



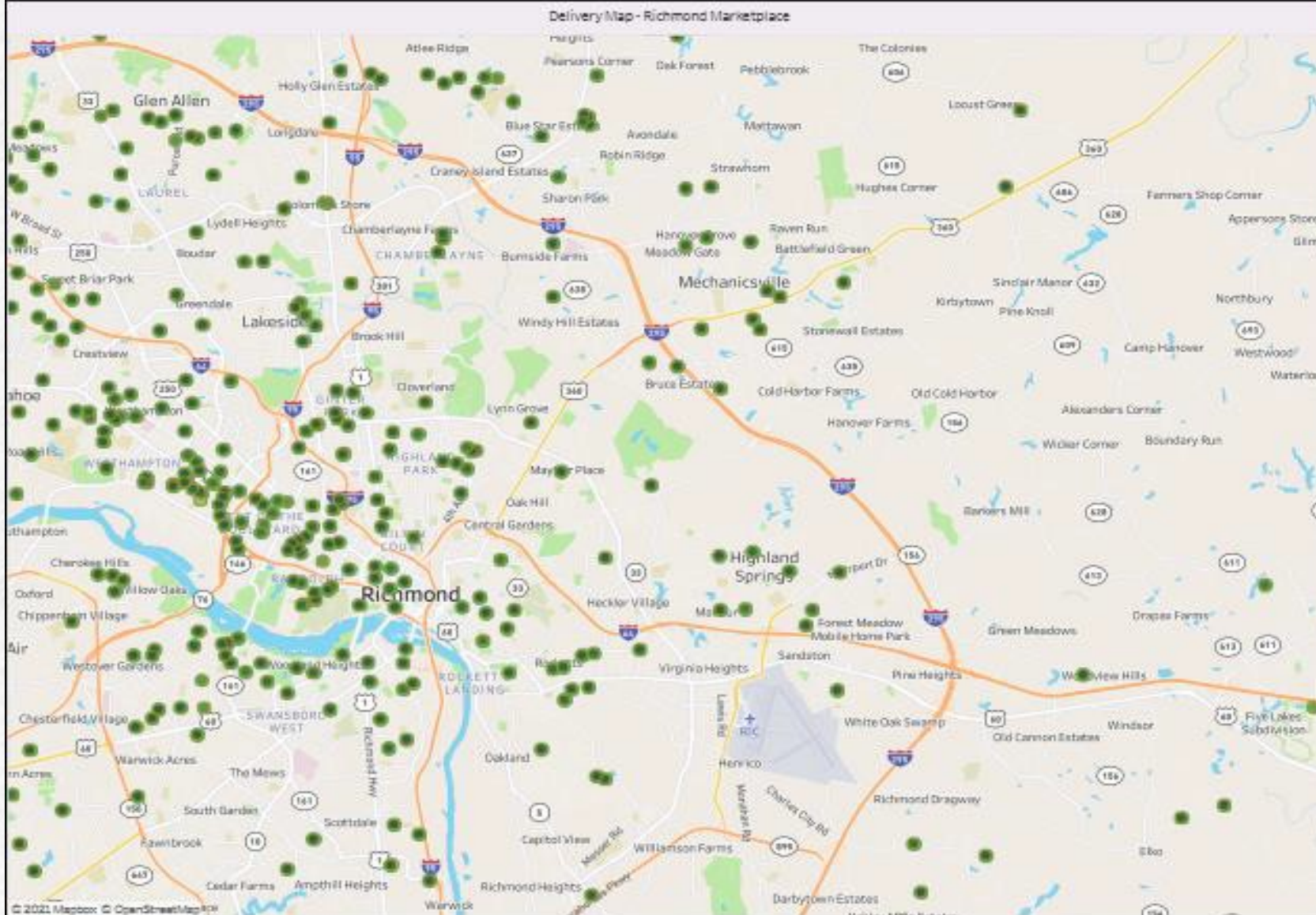
# Tableau Projects Delivered



## Customer Service

## Dashboard for The Shed

Customer address location of each order Delivered is been located on the map by marketplace of the company using Maps visuals.



<https://epicbliss.tech>



# Tableau Projects Delivered



## Dashboard for Partners

This Dashboard is Developed using Tableau Desktop for Partners to view and Analyze products rented and revenue generated from products they sell or rent, Using Live data from database as Data Source.

Where Company or Partner's of the company can filter out data, they would like to see using Location (Marketplace of Company), Product type and Partner Name.

Location	Product Type	Partner Name
(All) ▼	(All) ▼	(All) ▼

**All Time Average Order  
Revenue**

**\$171.96**

**MTD vs Prior MTD Rental  
Revenue Growth**

**-37.31%**

**MTD vs Prior MTD Growth  
in No. of Orders**

**-75.00%**

**MTD vs Prior MTD Partner  
Share Growth**

**-33.14%**

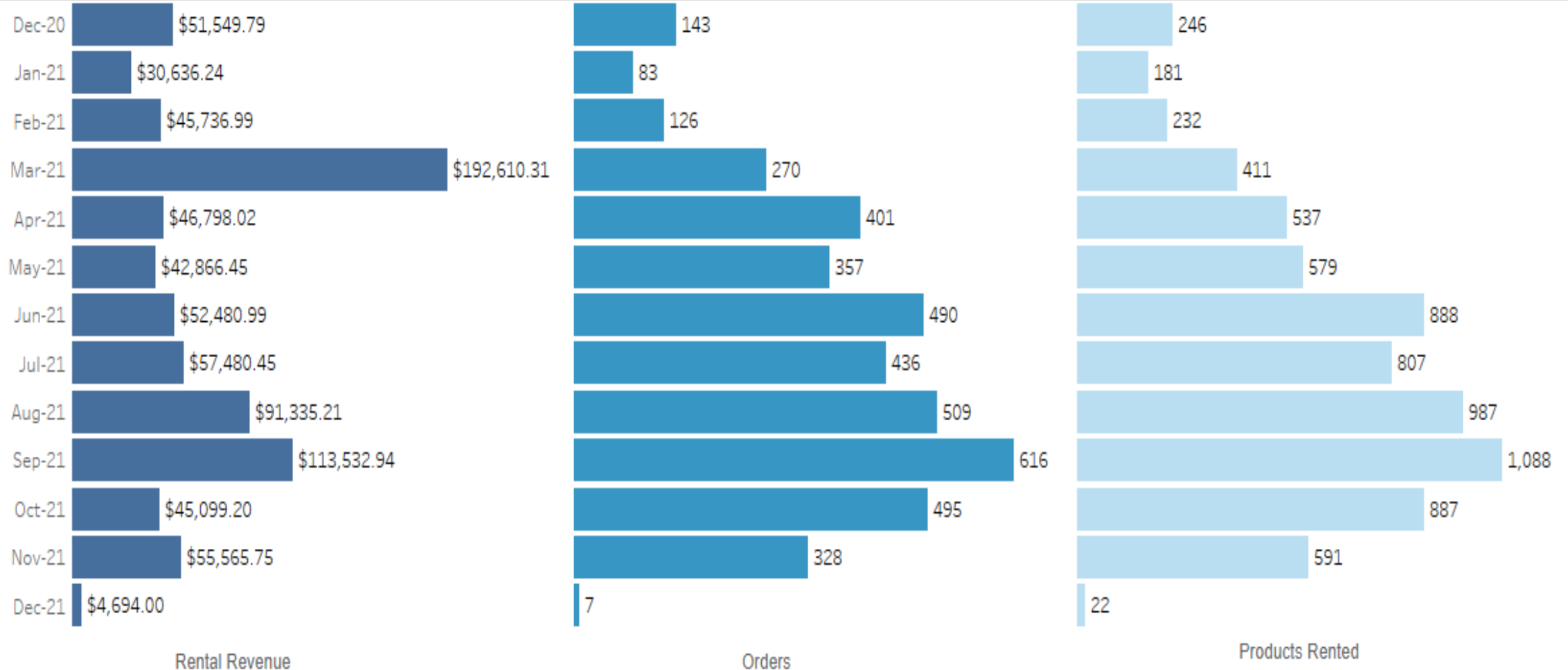
**Partner Rental  
Revenue - Overall**

**\$909,453.49**

# Tableau Projects Delivered

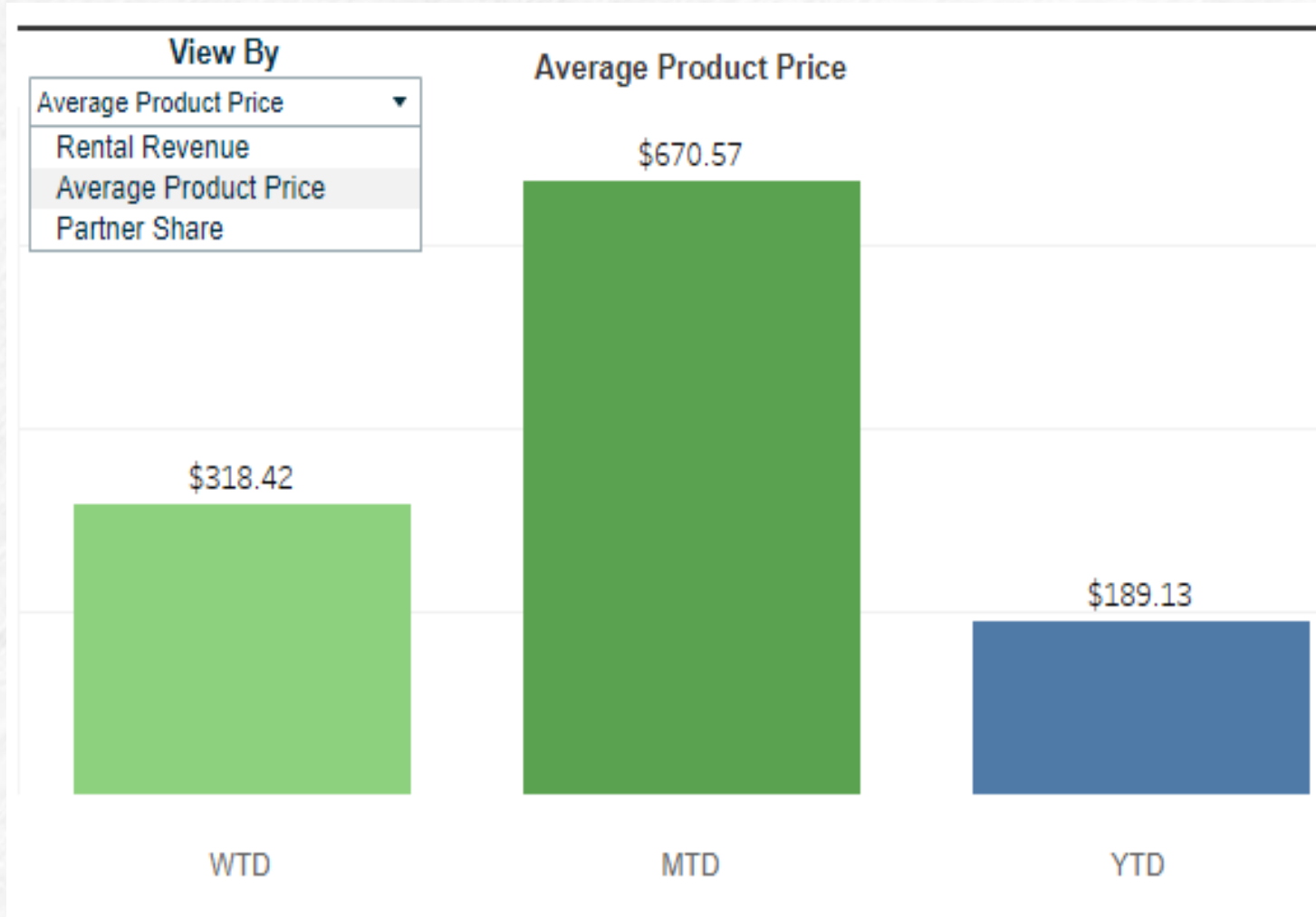


Orders and Rental Revenue Last 12 Months





# Tableau Projects Delivered



## Partner Report Dashboard

Partners can view Week to Date, Month to Date and Year to date overall data for three different fields on same bar chart just by selecting which field they would like to see data for.

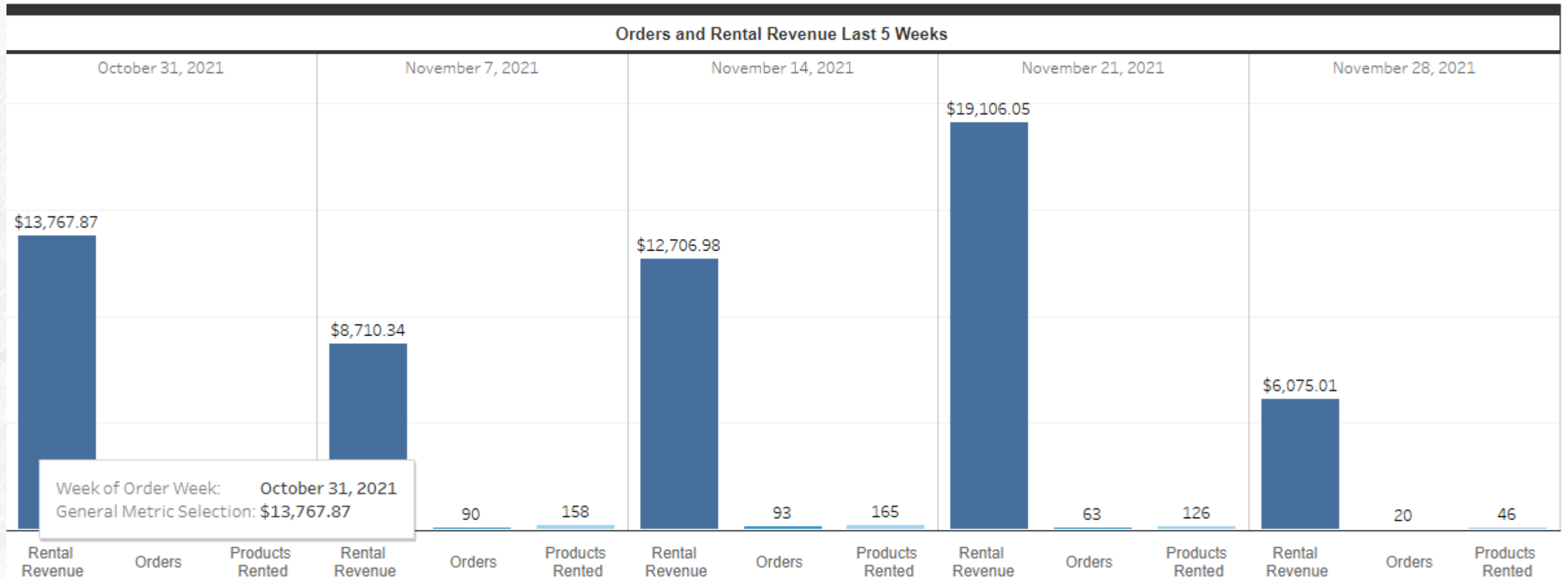
This approach of compiling more than 1 field data to just one visual will save the space for other data on the dashboard and will give a brighter look to the overall dashboard.

# Tableau Projects Delivered



## Partner Report Dashboard

Last five weeks are dynamically taken as and when the partner open the report on server and Rental Revenue generated, Orders created, and Products rented will be displayed for those week.





# Our Reach



Consistency in qualitative and operational practices

Passionate, experienced and dedicated resources

Flexible hiring models (hourly, monthly and yearly)

Round-the-clock technical support

Dedicated Developers for different Projects

100% timely project delivery.

Contemporary technical solutions for global businesses 95% Client repetitiveness

[www.epicbliss.tech](http://www.epicbliss.tech)

# Client Testimonials



Real pleasure consulting with Ravi & Team Epicbliss to set up our company's entire Sharepoint intranet and portal. We will definitely be reaching out to team for future work to be done. - Rachelle Glaccer **(USA)**

Overall Epicbliss delivered quality work. They have top-notch work ethics and a winning attitude. We recognize and appreciate your dedicated efforts. Thank you. - Stephen Pean **(Canada)**

A+++ . Very easy to work with and professional team Epicbliss - Archie Patterson **(Australia)**

Ravi and team pack in terabytes of SharePoint and BI wisdom :- ) Are very clear in communication and can provide one-stop solution for everything SharePoint, database, data analytics or BI. Look forward to working with them in future as well. - Marco **(Germany)**



# Contact Us



## INDIA

1109-10, Ganesh Glory, Jagatpur Road, Off. SG Highway, Near Nirma University, Ahmedabad, Gujarat 382481

## EMAIL

[info@epicbliss.tech](mailto:info@epicbliss.tech)

## USA

205, Henly PI Duluth, GA 30097

## SKYPE

epicbliss.tech



[www.epicbliss.tech](http://www.epicbliss.tech)